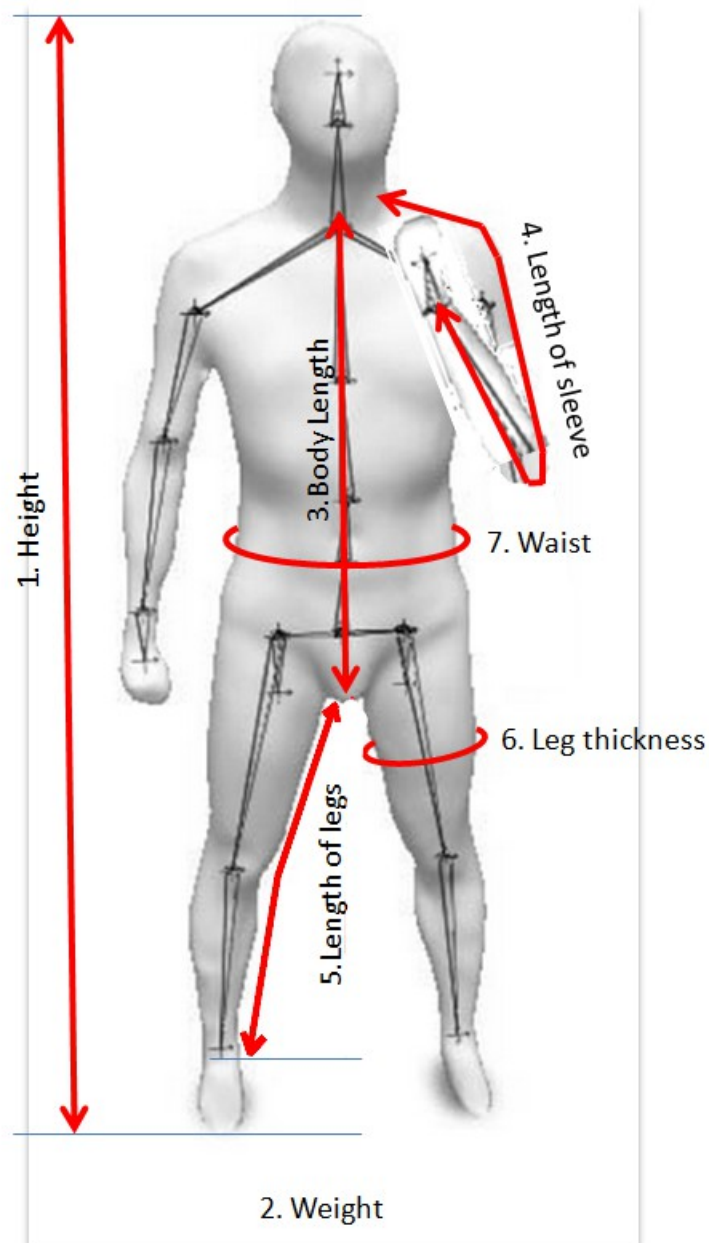




TROPHY OUTDOOR

400371 Cluj-Napoca
str. B.P.Hasdeu nr 107

tel: 00 40 744 796 467



Caving overall (Combie) TROPHY – it is made of water repellent Cordura® 500 with doubled tissues, reinforcements on elbows, knees and backside. Has a zip with two keys protected with welcro.

Suitable in red with black reinforcements

Size table	XXS	XS	S	M	L	XL	XXL	XXXL
Body length (measured from the base of the neck until between the legs – where the trousers tissue is)	65	68	71	74	77	80	83	86
Length of sleeve (measured on the exterior of the arm from the base of the neck over the flexed elbow until the wrist)	74	76	78	80	82	85	88	90
Leg length (from between the legs – where the trousers tissue is until under the ankle)	72	74	76	78	80	82	84	86

When You order, please let us know also the persons height and weight.

For extra or personalized sizes we need also the leg thickness, the waist and chest circumference.

Caving underwear (Subcombie) TROPHY – it is made from micropolar 200 and it is suitable in with or without reinforcements. The reinforcements are on elbows, knees and backside. The underwear's zip has three keys, and is long, it passes up to the the weist on the back side.

It is suitable in different colours with black reinforcements.

Size table	XXS	XS	S	M	L	XL	XXL	XXXL
Body length (measured from the base of the neck until between the legs – where the trousers tissue is)	65	68	71	74	77	80	83	86
Arm length (measured on the exterior of the arm from the base of the neck over the flexed elbow until the wrist)	74	76	78	80	82	85	88	90
Leg length (from between the legs – where the trousers tissue is until under the ankle)	72	74	76	78	80	82	84	86

When You order, please let us know also the persons height and weight.

For extra or personalized sizes we need also the leg thickness, the waist and chest circumference.

Price: Combie 55 euro
Subcombie 25 euro

For personalized or extra sizes we charge 5 euro/item.